

Aircraft Interiors Specialty Hardware



Ancra Quality

A Fitting Tradition

Since 1969, Ancra International has built a tradition of designing and manufacturing aircraft components and assemblies that set new standards in engineering, efficiency, and performance. Now four decades later, the name Ancra is known for world-class design, quality materials and attention to customer requirements. This commitment to excellence has produced 75 domestic and foreign patents, 51 product trademarks, more than 75 FAA Supplemental Type Certificates (STCs), and proprietary engineering software.



Today, as part of the over \$2 billion, global family of The Heico Companies LLC, Ancra pursues innovation while maintaining superior service and

quality. We've developed a solid reputation as a leading maker of aircraft seat and restraint fittings.

Made to Last

In production, an Ancra part is monitored through the AS9100 Quality Management system, the highest achievable quality system for aerospace and aviation companies, and the FAA Production Certificate, number 721NM. Each Ancra product is made by a dedicated workforce of industry veterans in 70,000 square-feet of manufacturing space, including 5,000 square feet of integrated machining capabilities and a 30,000 square foot machine center in Ensenada, Mexico. Made from parts and materials selected for performance and durability to offer our customers the most cost-effective and reliable solutions, our products are put to the test for performance, durability and reliability.

TABLE OF CONTENTS

Aircraft Interiors Specialty Hardware

Anchor Plates & Track	3
Panel Stanchion Fittings	4
Seat Attachments	8
Specialty Hardware	13
Nets & Straps	14
Tie Down & Net Hardware	16
Warranty Statement	21
Index	22

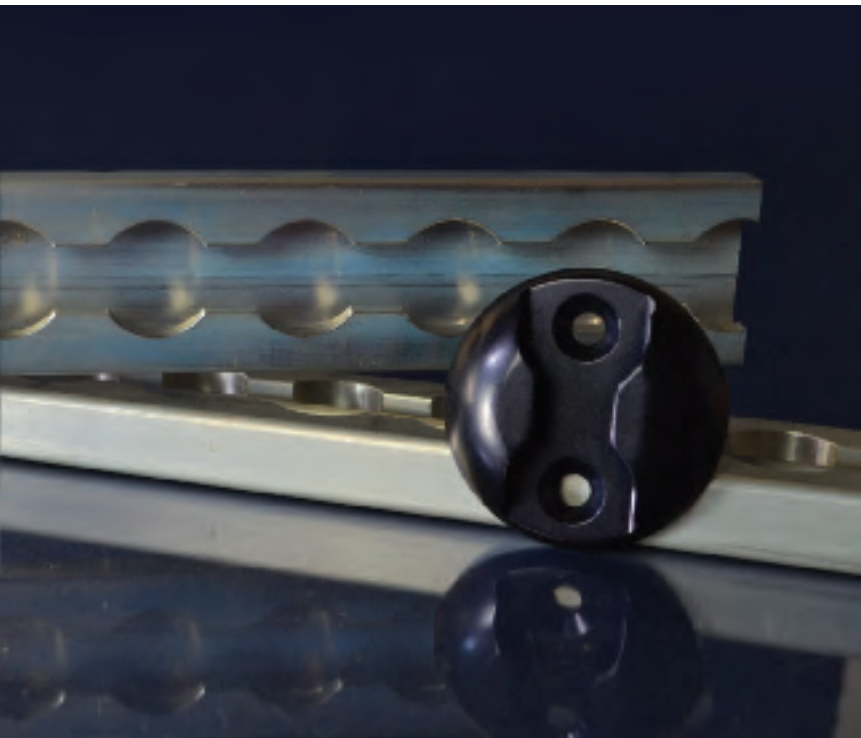
IMPORTANT

Proprietary rights owned by Ancra International LLC are included in the information contained in this catalog. By accepting it, you are agreeing not to reproduce all or part of this catalog, transfer the information to other documents, or use or disclose information in this catalog to others for manufacturing, technical or any other purpose without the express written permission of Ancra International LLC.

Anchor Plates & Track

The load stops here, stays here.

Ankra seat tracks are structural members that transmit loads via the floor beams to the fuselage for maximum strength. Designed for seats but also called logistics track, the hard working components are versatile enough to handle many applications such as securing cargo, panels, tie downs or stanchions. They are corrosion resistant, durable and strong.



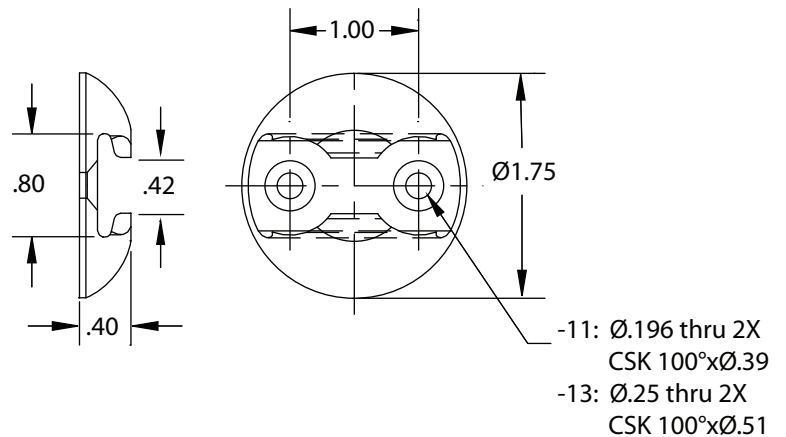
Anchor Plates – For use with single stud cargo fittings only. Attachment point for nets and tie downs. Its smooth, low profile design provides protection from damage to cargo and baggage. Fittings secure easily into these plates.



40000-11 Anchor Plate, Dark Gray #16099 w/ Ø.196 mounting holes

40000-13 Anchor Plate, Dark Gray #16099 w/ Ø.265 mounting holes
Finish: Anodized per MIL-A-8625, Type II Class 2. Color Dark Gray Per FED-STD 595 Color 16099.

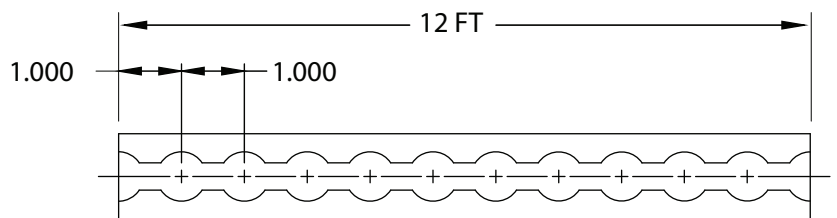
Load Capacity: 4,000 lb vertical, 3,000 lb at 45° angle and 2,000 lb horizontal and 90° to the direction of the track.
Weight: .04 lb



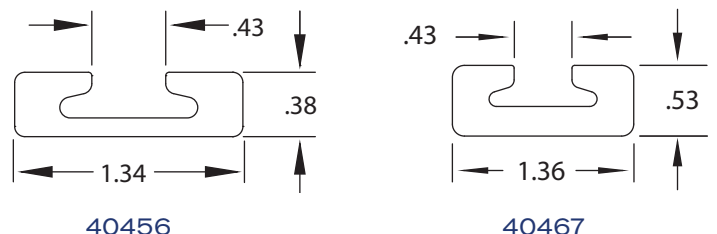
Aircraft Seat Track – Standard aircraft track is used in the securement of cargo and interior assemblies. Made from 7075-T6 aluminum alloy extrusion to meet specification MS 33601 and ISO 7166. Available in heavy and medium duty.



40456-10-144 Medium Duty Aircraft Track
40456-11-144 Medium Duty Aircraft Track
Finish: -10 Clear anodized per MIL-A-8625, Type II, Class 1
-11 Unanodized
Standard Length: 12'
Load Capacity: 4,500 lbs. vertical
Weight: .40 lb/ft.



40467-10-144 Heavy Duty Aircraft Track
40467-11-144 Heavy Duty Aircraft Track,
Finish: -10 Clear anodized per MIL-A-8625, Type II, Class 1
-11 Unanodized
Standard Length: 12'
Load Capacity: 6,000 lbs. vertical
Weight: .60 lbs/ft.



Panel & Stanchion Fittings

Quality is built in, not added on

Safe, strong and reliable product systems require quality components. At Ankra, our experts monitor the entire manufacturing process through the AS9100 Quality Assurance System, the highest achievable quality system for aerospace and aviation companies.



Threaded Studs – These multi-purpose, semi-permanent interior track fittings are specifically designed to be threaded into the part to be mounted. Designed as an interior tie down incorporating a steel stud and retainer for use where multiple attachments are required. Other sizes and variations may be available on special request and may be subject to minimum quantities.



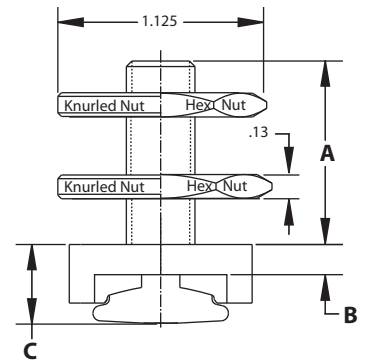
40073-13



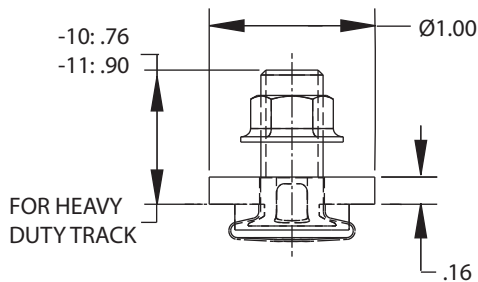
40073-20

- 40073-11** Threaded Stud w/knurled nut
- 40073-13** Threaded Stud w/2 knurled nuts
- 40073-14** Threaded Stud w/2 knurled nuts
- 40073-16** Threaded Stud w/2 knurled nuts
- 40073-20** Threaded Stud w/2 hex nuts
- 40073-31** Threaded Stud w/knurled nut
- 40073-32** Threaded Stud w/knurled nut

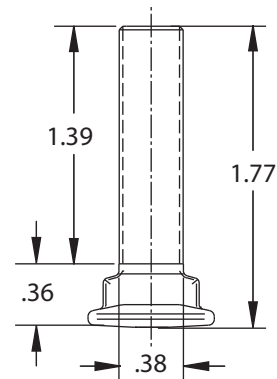
Thread size: 3/8-24 UNF-3A
 Finish: Cadmium plated per AMS-QQ-P-416
 Load Capacity: 4,000 lb vertical and horizontal
 Weights: See Table



Dash No.	A	B	C	Weight
-11	0.75	0.17	0.44	0.12
-13	1.25	0.17	0.44	0.16
-14	1.34	0.17	0.44	0.2
-16	2.00	0.17	0.44	0.15
-20	1.25	0.17	0.44	0.15
-31	0.87	0.17	0.44	0.11
-32	0.94	0.17	0.44	0.15

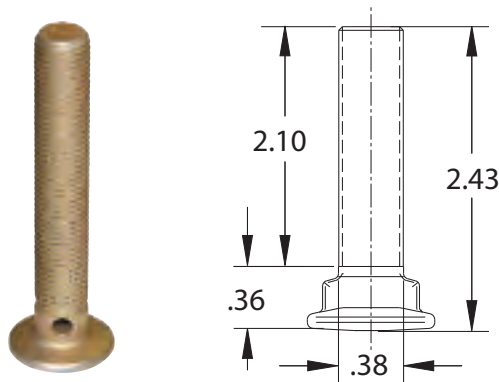


- 40351-10** Threaded Stud
 - 40351-11** Threaded Stud
- Thread Size: 3/8-24 UNF 3A
 Finish: Cadmium plated per AMS-QQ-P-416.
 Load Capacity: 4,000 lbs in any direction.
 Weight: -10: .09 lb, -11: .10 lb



- 40352-10** Threaded Stud
- Thread Size: 3/8-24 Ref
 Finish: Cadmium plated per AMS-QQ-P-416, Type II, Class 1 and baked.
 Heat treated components per AMS-H-6875
 Weight: .06 lb

Threaded Studs – Continued



43112-11 Threaded Stud
 Thread Size: 3/8-24 UNF-3A
 Finish: Cadmium plated per AMS-QQ-P-416, Type II, Class 3 and baked.
 Heat treated components per AMS-H-6875
 Weight: .07 lb

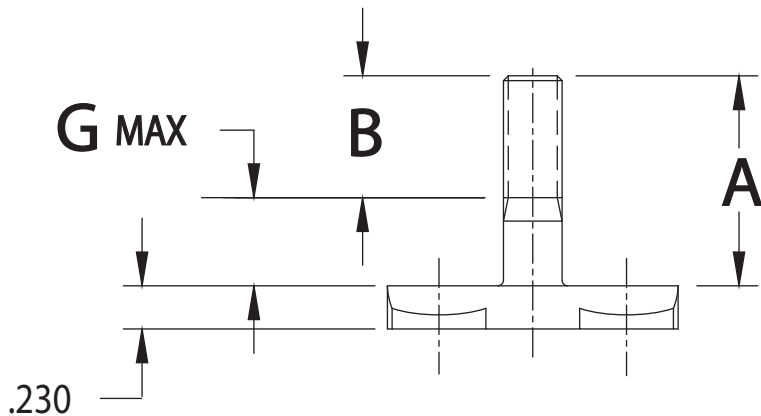
Threaded Double Studs – This series of fittings provides track attachment capabilities for a wide range of interior applications. The threaded stud is installed into the item to be mounted, and held in position with a locknut and retainer. Offset configurations are available for those applications where floor attachment space is restricted. Other sizes, finishes and variations may be available on special request and may be subject to minimum quantities.



40361-23

40361-156

40361-21 Threaded Double Stud
40361-23 Threaded Double Stud
40361-25 Threaded Double Stud
40361-37 Threaded Double Stud
40361-56 Threaded Double Stud
40361-118 Threaded Double Stud
40361-156 Threaded Double Stud
 Finish: -21 thru -56: Cadmium plated gold chromate and baked.
 -118 & -156: Zinc nickel alloy plated over stainless steel.
 Heat treated to 180-200 KSI per AMS-H-6875
 Weights: See Table

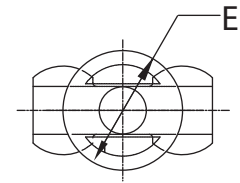
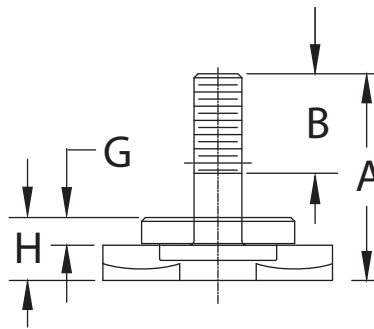


Dash No.	A	B	Thread	G	Weight
-21	1.02	0.81	3/8-24		.08
-23	1.28		5/16-24	0.08	.07
-25	1.78		5/16-24	0.08	.08
-37	0.77	0.38	3/8-24		.07
-56	1.95	1.00	3/8-24		.10
-118	1.74	0.62	3/8-24		.22
-156	1.95	1.00	3/8-24		.11

Threaded Double Studs – Continued



Standard Configuration



Standard Configuration

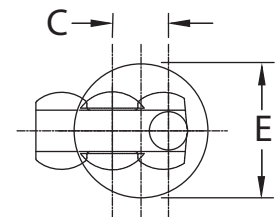
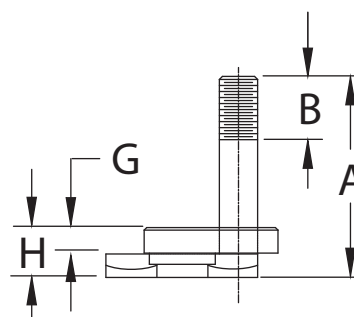
Dash No.	A	B	C	E dia.	G	H	Weight
-10	1.15	0.62	-	1.00	0.25	0.36	0.15
-11	1.97	0.62	-	1.00	0.25	0.36	0.15
-12	1.67	0.62	-	1.00	0.25	0.36	0.15
-13	1.43	0.62	-	1.00	0.25	0.36	0.15
-15	1.25	0.81	-	1.00	0.15	0.26	0.10
-18	1.67	0.62	-	1.00	0.15	0.26	0.20
-22	2.76	2.44 Min	-	1.00	0.25	0.36	0.15
-27	2.44	2.13	-	1.00	0.15	0.26	0.13
-29	1.43	1.12	-	1.00	0.15	0.26	0.11

- 40191-10** Threaded Stud, Standard Configuration
- 40191-11** Threaded Stud, Standard Configuration
- 40191-12** Threaded Stud, Standard Configuration
- 40191-13** Threaded Stud, Standard Configuration
- 40191-15** Threaded Stud, Standard Configuration
- 40191-18** Threaded Stud, Standard Configuration
- 40191-22** Threaded Stud, Standard Configuration
- 40191-27** Threaded Stud, Standard Configuration
- 40191-29** Threaded Stud, Standard Configuration

The body is one-piece steel forging, heat treated and cadmium plated. The retainer is alloy steel.
 Finish: Cadmium plated per AMS-QQ-P-416, Type II, Class 3, Gold Chromate and baked.
 Load Capacity: 6,500 lb tension and shear.
 Weight: See Table



Offset Configuration



Offset Configuration

Dash No.	A	B	C	E dia.	G	H	Weight
-14	1.43	0.62	0.55	1.31	0.25	0.36	0.16

- 40191-14** Threaded Stud, Offset Configuration

The body is inertia welded steel forging, heat treated and cadmium plated. The retainer is alloy steel.
 Finish: Cadmium plated per AMS-QQ-P-416, Type II, Class 3, Gold Chromate and baked.
 Load Capacity: 6,500 lb tension and shear.
 Weight: See Table

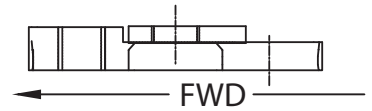
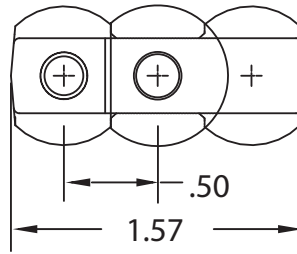
Threaded Base, Flush – These low profile fittings are designed for use where added clearance is required.



42182-10



42182-50



42182-10 Fitting Assembly, Flush Mount

42182-11 Fitting Assembly, Flush Mount

42182-50 Fitting Assembly, Flush Mount

Thread Size: 1/4-28 UNF-3B for -10 & -50
5/16-24 UNF-3B for -11

Finish: -10 & -11 are Cadmium plated

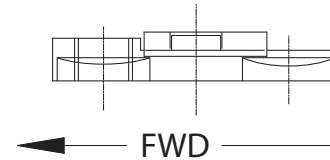
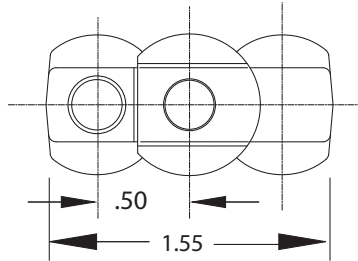
-50 is Zinc Nickel plated

Load Capacity: 4,300 lb vertical, 1,700 lb horizontal

Weight: .05 lb



44413-10



44413-10 Fitting Assembly, Flush Mount w/UNF thread

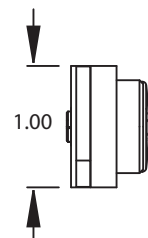
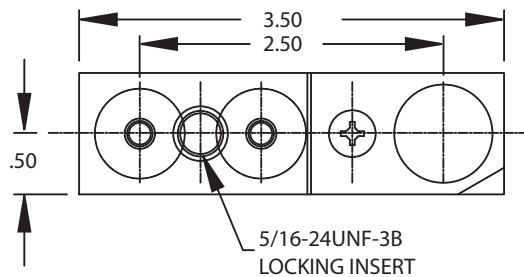
44413-11 Fitting Assembly, Flush Mount w/UNJF thread

Thread Size: 5/16-24 UNF-3B for -10
5/16-24 UNJF-3B for -11

Finish: Cadmium plated

Load Capacity: 4,700 lb vertical, 4,450 lb horizontal

Weight: .05 lb



42911-11 Threaded Base

42911-41 Threaded Base, Anti-Rattle

Finish: -10 Body is Zinc plated per ASTM B633 gold

-41 Body is Zinc plated per ASTM B633 with a green BMS 10-11 primer coat

Load Capacity: 10,000 lb vertical, 4,700 lb horizontal.

Weight: .40 lb

Seat Attachments

Made to last

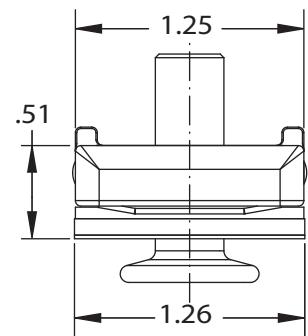
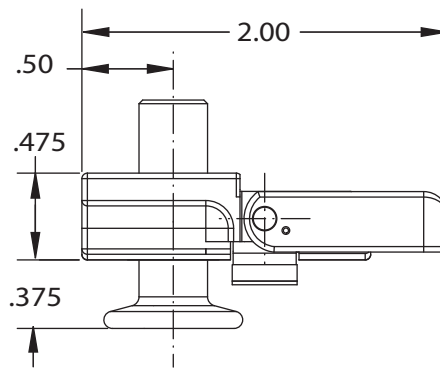
From initial customer specs through design, engineering, testing and final production, Ancra engineers direct each step to assure the final delivered product will meet operational criteria and will perform as desired in a variety of conditions and environments. If it carries the Ancra name, you know it's right.



Quick Connect Seat Attachment Fittings – Designed to quickly attach seat legs to track and meet airframe manufacturers' specifications and passenger seat manufacturers requirements. Available for both front and rear seat leg applications. Current models feature anti-rattle mechanisms satisfying requirements of present aircraft.



49636-10



49636-10 Front Leg Ancra Lock Seat Fitting (Press to Lock)

49636-12 Front Leg Ancra Lock Seat Fitting (Press to Lock)

Finish: Zinc-Nickel alloy plated per AMS 2417, Type II, with Trivalent chromate topcoat.

Meets RoHS and "Green Airplane" requirements for environmentally friendly material.

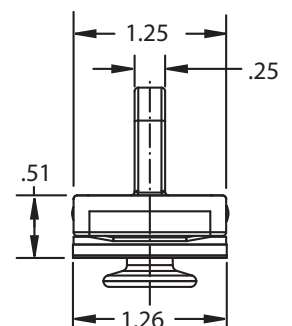
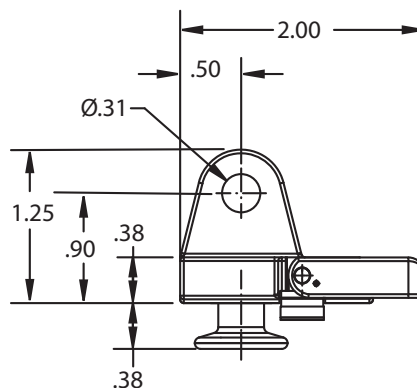
Load Capacity: 12,280 lb downward compression load/no shear load.

* Use with Ancra Lock Rear Leg or other rear leg seat fittings for shear and tensile load.

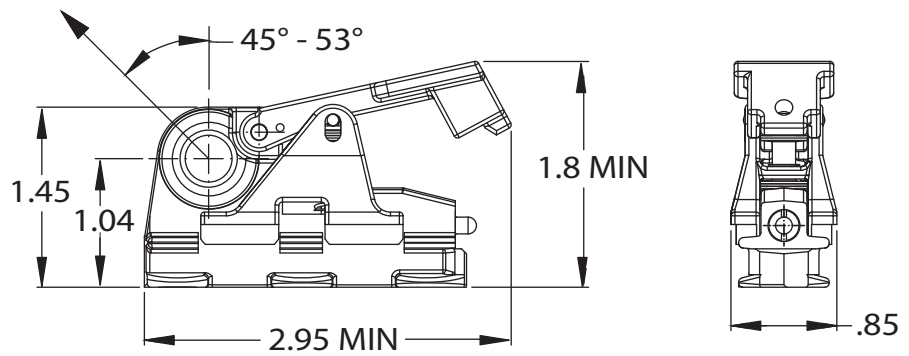
Weight: -10: .24 lb, -12: .26 lb



49636-12



Quick Connect Seat Attachment Fittings – Continued



49648-20 Rear Leg Ancr Lock Seat Fitting

Designed to function with MS 33601 Heavy Duty Seat Track or equivalent.
 Finish: Zinc-Nickel alloy plated per AMS 2417, Type II, with Trivalent chromate topcoat.
 Meets "Green Airplane" requirements for environmentally friendly material.
 Load Capacity: 15,000 lb in direction show in illustration.
 Meets 16G Forward Crash Load Requirement
 Weight: .43 lb

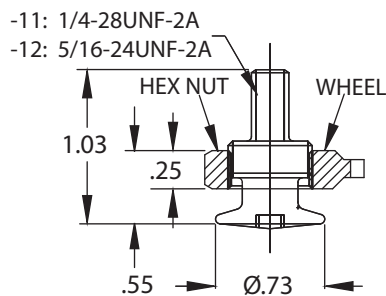
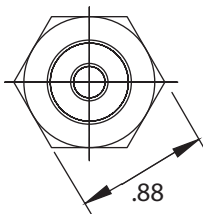


Seat Attachment Fittings – Designed to meet airframe manufacturers specifications and passenger seat manufacturers requirements. We offer a wide range of fittings for both front and rear seat leg applications. All current models feature anti-rattle mechanisms satisfying requirements of present aircraft.

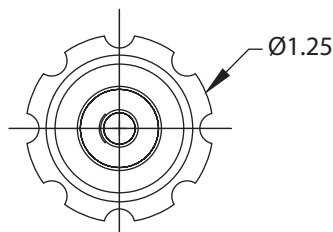
Seat Fitting, Front Leg – Our most popular fittings. Other styles and variations may be available upon special request and subject to minimums.



43061-11



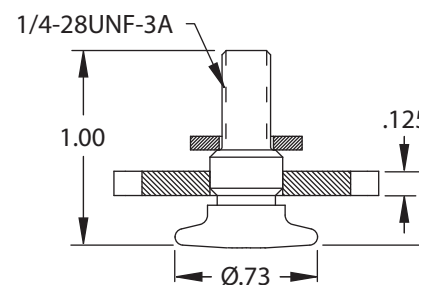
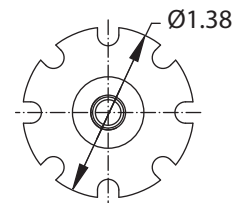
43061-12



43061-11 Front Leg Seat Fitting w/hex nut)

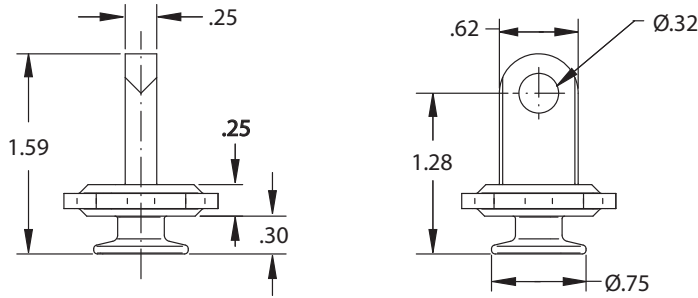
43061-12 Front Leg Seat Fitting w/wheel

Finish: Studs are cadmium plated per QQ-P-416, Type II, Class 2 and baked.
 Hex nuts and locking wheels are black teflon coated.
 Weight: -11: .08 lb, -12: .09 lb



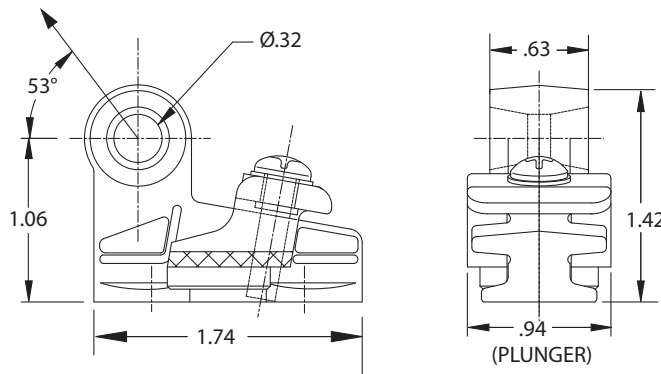
43021-12 Front Leg Seat Fitting w/wheel
 Finish: Studs and Locking wheel are zinc nickel plated. Locking wheel is gray teflon coated.
 Load Capacity: 3,500 lb
 Weight: .07 lb

Seat Fitting, Front Leg – Continued

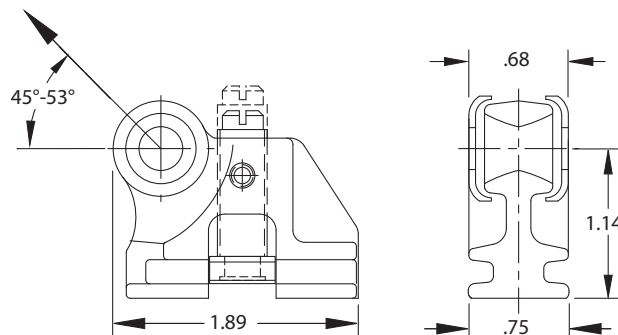


70028-10 Front Leg, Ancra Lite Assembly
 Finish: Zinc-Nickel alloy plated. Wheel is gray teflon topcoat. Meets RoHS and “Green Airplane” requirements for environmentally friendly material.
 Load Capacity: 4,000 lb vertical
 Weight: .12 lb

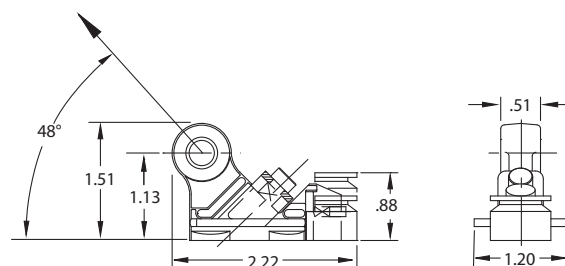
Seat Fitting, Rear Leg – Our most popular rear seat leg fittings. Other styles and variations may be available upon special request and subject to minimums.



47413-50 Rear Leg Seat Fitting
 Finish: Black epoxy paint with painted light blue or yellow stripe. Stripe visually aids to show plunger in up or down position.
 Load Capacity: 12,000 lb in direction shown in illustration.
 Weight: .26 lb

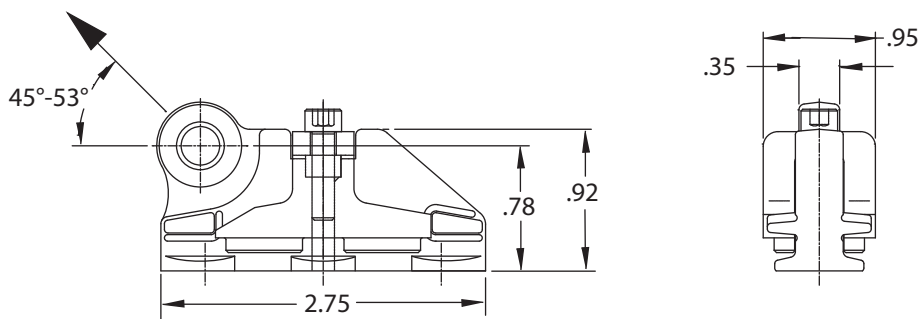


47886-13 Rear Leg Seat Fitting
 Finish: Body is cadmium plated with black teflon coating and locking assemblies are cadmium plated.
 Load Capacity: 11,200 lb in direction shown in illustration.
 Weight: .27 lb



49271-10 Rear Leg Seat Fitting
 Finish: Cadmium plated per AMS-QQ-P-416, Type I, Class 3 with black teflon top coat. Plungers have a blue stripe to visually aid to show if plunger is up or down.
 Load Capacity: 10,000 lb
 Weight: .26 lb

Seat Fitting, Rear Leg – Continued



49472-16 Rear Leg Seat Fitting, Triple Stud

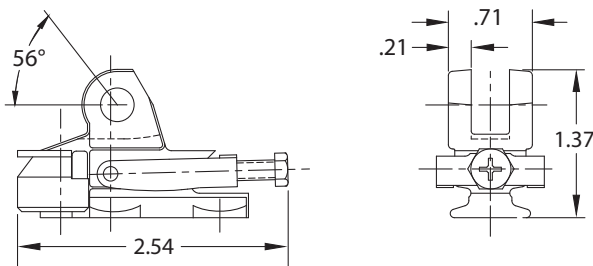
This fitting is designed to fit 747-400 type track as well as MS33061/ISO 7166 track.

Finish: Zinc-Nickel alloy plated per AMS 2417, Type II, Trivalent chromate and black colored topcoat.

Load Capacity: 15,000 lb in direction shown in illustration.

Meets 16G Forward Crash Load Requirement

Weight: .45 lb



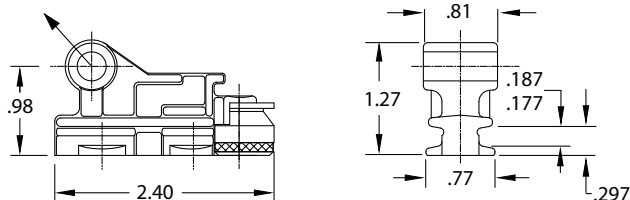
40566-14 Rear Leg Seat Fitting

Meets requirements of FAR 25 and FAR 37 TSO-C39

Finish: Cadmium plated

Load Capacity: 9,700 lb at 56° angle as shown.

Weight: .27 lb

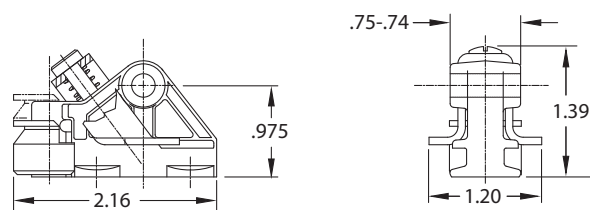


42854-11 Rear Leg Seat Fitting

Finish: Cadmium plated per AMS-QQ-P-416, Type II, Class 3 with teflon coating

Load Capacity: 8,000 lb at 48° angle from horizontal as shown.

Weight: .24 lb



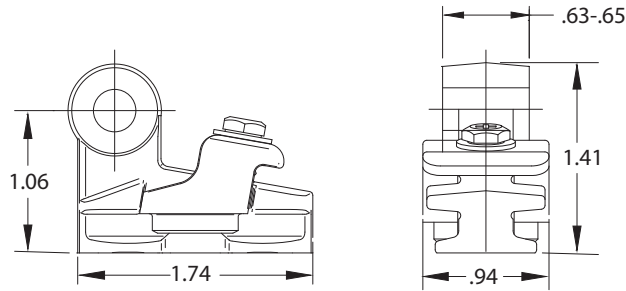
44585-10 Rear Leg Seat Fitting

Finish: Black teflon coated body

Load Capacity: 5,000 lb any direction

Weight: .25 lb

Seat Fitting, Rear Leg – Continued



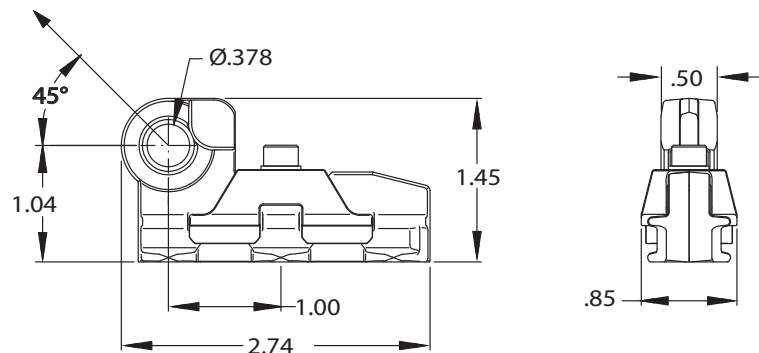
45232-84 Rear Leg Seat Fitting
 Finish: Black epoxy paint with painted light blue or yellow stripe. Stripe visually aids to show plunger in up or down position.
 Load Capacity: 12,000 lb in direction shown in illustration.
 Weight: .27 lb

49694-10 Rear Leg Ancra Lite Seat Fitting
49694-11 Rear Leg Ancra Lite Seat Fitting

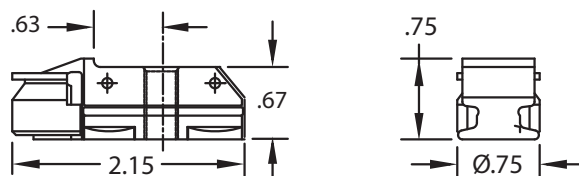
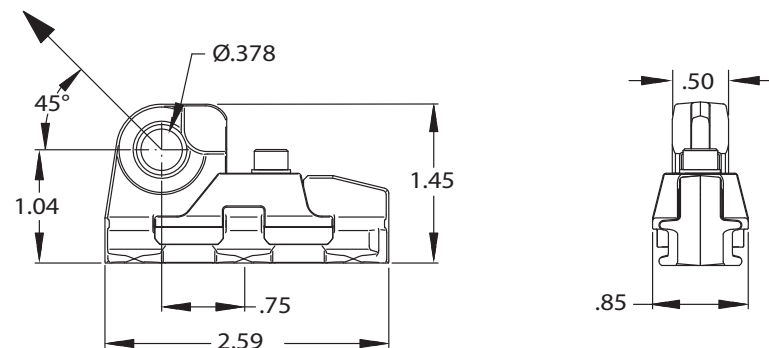
Designed to function with MS 33601 Heavy Duty Seat Track or equivalent.
 Finish: Zinc-Nickel alloy plated per AMS 2417, Type II, with Trivalent chromate topcoat.
 Meets "Green Airplane" requirements for environmentally friendly material.
 Load Capacity: 11,200 lb in direction shown in illustration.
 Meets 16G Forward Crash Load Requirement
 Weight: -10: .12 lb, -11: .35 lb



49694-10



49694-11



43166-10 Low Profile
 Finish: Cadmium plated per AMS-QQ-P-416
 Load Capacity: 7,500 lb vertical and 5,000 lb horizontal
 Weight: .19 lb

Specialty Hardware

Engineered to perform

Ancra uses advanced tools like the CATIA solid modeling and NASTRAN Finite Element Modeling to develop faster, more efficient solutions for cargo securement. In addition, proprietary load analysis software simulates applied loads for various configurations and conditions. Ancra is Number One by design.



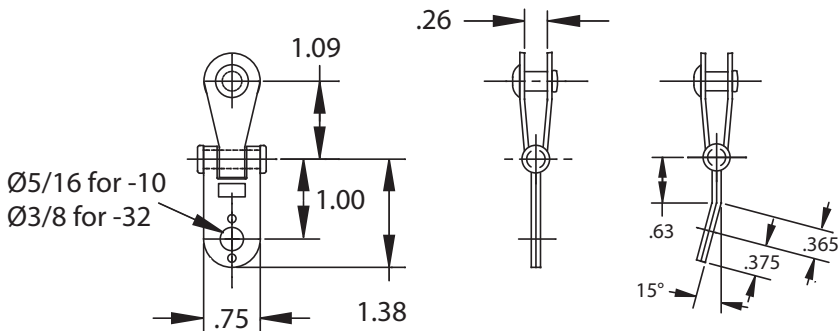
Seat Belt Shackles – Ancra’s line of seat belt shackles are designed to incorporate low profile design with today’s generation of new lightweight seats. These center pivoting shackles are made of stainless steel and are available in flat and 15° bend. A 20° bend shackle is available upon request and may be subject to minimum production runs.



41713-10

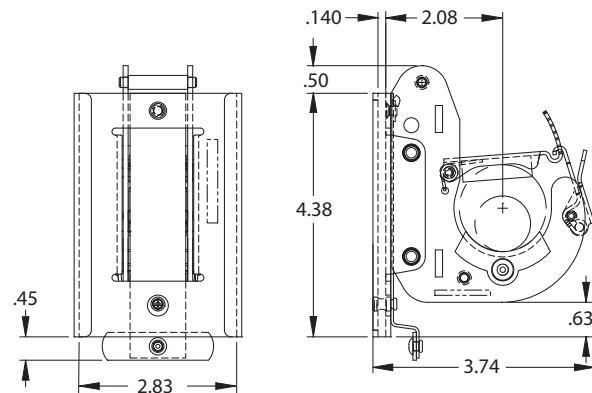


41713-32



41713-10 Seat Belt Shackle, Flat
41713-32 Seat Belt Shackle, 15° bend
 Material: 301 Stainless Steel
 Load Capacity: Meets requirements of NAS 809 (1-1-56), P 4.1.3.
 -10 at 2,500 lb and -32 at 2,800 lb
 Weight: -10: .06 lb, -32: .07 lb

Medivac Restraint – This Stanchion Mount Litter Support Bracket is designed to support standard military type hospital litters and quickly adjusts to various heights as required. Although originally designed for aircraft applications, this bracket can also be installed in personnel tanks, ambulances and troop ships. The adjustment feature allows for varying density requirements in air evacuation and also permits litters to be tilted when required.



42630-11 Litter Support Bracket, Stanchion Mount
 Load Capacity: 255 lb downward and 75 lb upward.
 Weight: 1.25 lb

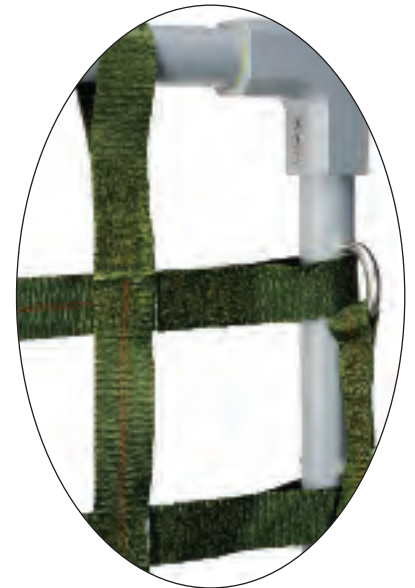
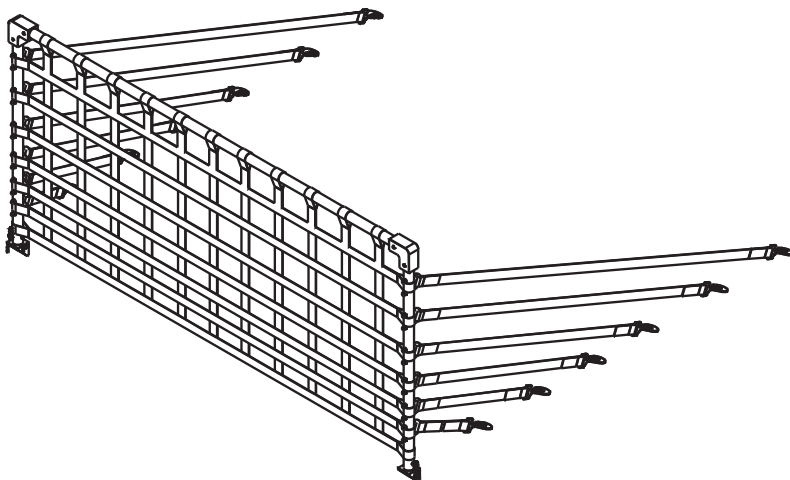
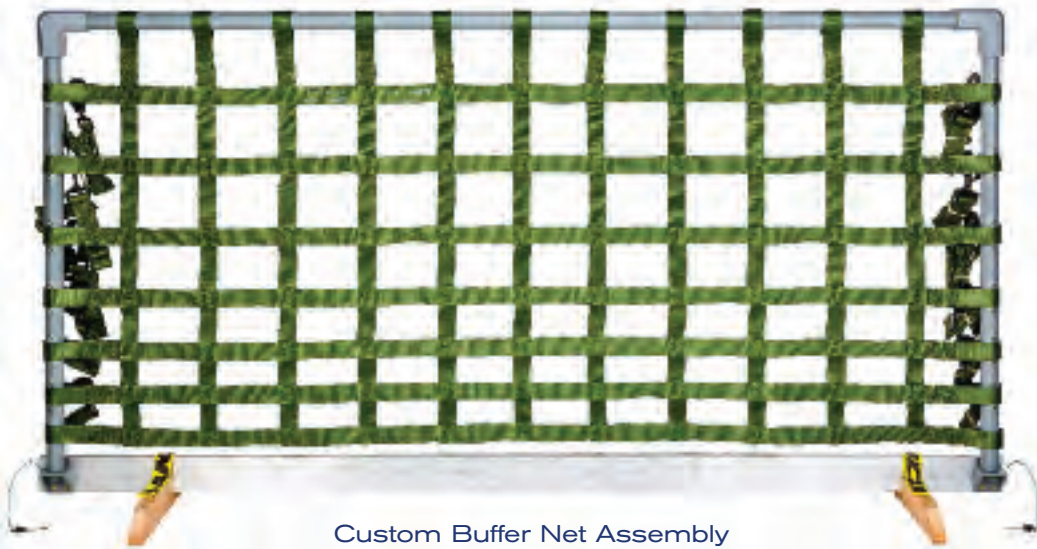
Nets & Straps

Manufacturing done right

Ancra has quality approvals from most major airframe manufacturers, aircraft conversion providers and the U.S. Government. Quality assurance and control programs are developed in accordance with FAA regulations and military and industrial standards.



Custom Nets – Nets for various applications are available upon special request. Below is an example of a custom buffer net assembly to separate and protect troops from cargo and equipment in an A400 military transport aircraft and a net assembly for a regional jet to restrain baggage. Let our team custom design and build a net to meet your demanding requirements.



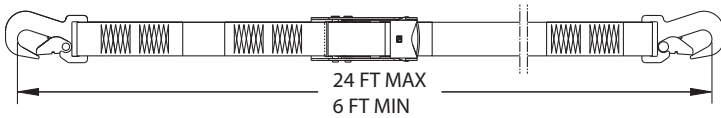
Custom Nets – Continued



Regional Jet Net Assembly

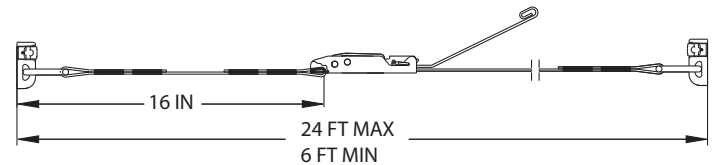


Custom Restraint Straps – Cargo restraint strap assemblies can be designed and fabricated for securing cargo typical for commercial aircraft use. Tie down arrangements are custom designed in order to safely support cargo on pallets in compliance with TSO; mandatory with no exceptions for all aircraft restraint strap assemblies starting with January 2016. Available with a choice of overcenter (70059) or ratchet (70060) buckle and with either snap hooks (-10 configuration) or double stud ISO fittings (-11 configuration).



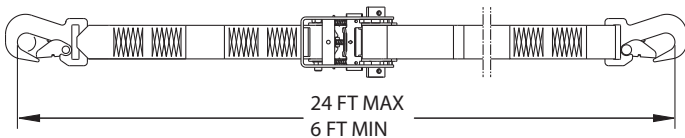
70059-10-XX-XX

70059-10 1-3/4" Overcenter TSO Strap w/Snap Hooks
70059-11 1-3/4" Overcenter TSO Strap w/Double Stud Fittings
 Complies with FAA TSO C172 and SAE AS5385 Rev C.



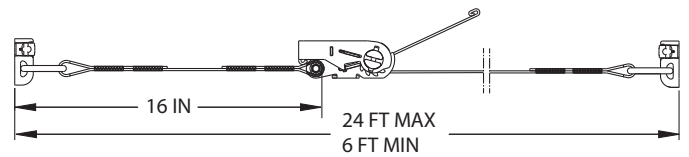
70059-11-XX-XX

Load Capacity: 6,000 lb
 Load Limit: 4,000 lb
 Weight: Varies by end hardware and length



70060-10-XX-XX

70060-10 1-3/4" Ratcheting TSO Strap w/Snap Hooks
70060-11 1-3/4" Ratcheting TSO Strap w/Double Stud Fittings
 Complies with FAA TSO C172 and SAE AS5385 Rev C.



70060-11-XX-XX

Load Capacity: 6,000 lb
 Load Limit: 4,000 lb
 Weight: Varies by end hardware and length

CODE	COLOR DESCRIPTION
00	NATURAL, WHITE
01	OLIVE DRAB NO. 7
02	CAMOUFLAGE GREEN NO. 483
03	AIR FORCE SAGE GREEN NO. 1531
04	AIR FORCE YELLOW NO. 1365
05	BLACK-FED COLOR SPEC 595, COLOR #37038
06	RED-FED COLOR SPEC 595, COLOR #11350
07	BLUE-FED COLOR SPEC 595, COLOR #15065
08	GRAY-FED COLOR SPEC 595, COLOR #36231
09	TAN-FED COLOR SPEC 595, COLOR #33446
10	GREEN-FED COLOR SPEC 595, COLOR #14090
11	YELLOW-FED COLOR SPEC 595, COLOR #13655

(Subject to minimums)

Part No. Code Example

70060 - - -

Webbing Color Code (See Table)

Length in Feet (To the nearest foot)

Defines End Fitting (-10 or -11)

Basic Part No.

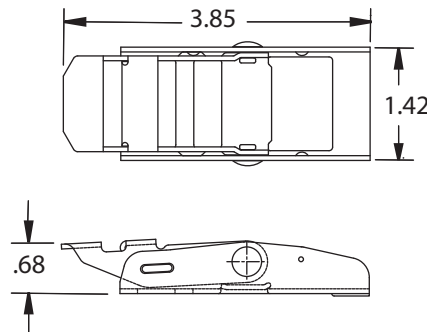
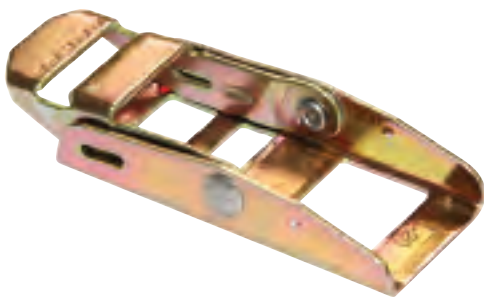


Tie Down & Net Hardware

Certified and documented

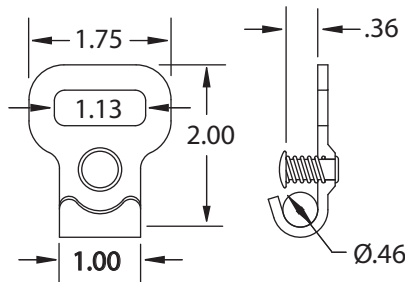
Ankra certified products are offered under FAA regulations and military and industrial standards. All parts carry full traceability and documentation.

Overcenter Buckle – This unique 1" buckle features both simplicity and easy operation. Tension is applied by pulling web handhold and rotating lever. The lever is self-closing and will automatically rotate to full closed, detent position. Release is accomplished by pulling upward on the web handhold. The bottom surface is cushioned by the webbing. Meets FAA requirements for use on straps and nets.

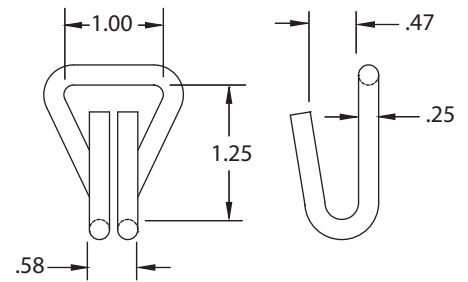


42816-20 1" Overcenter Buckle
 Finish: Zinc plated per ASTM B633, Class Fe/Zn, Type VI, trivalent gold chromate (RoHS compliant).
 Load Capacity: 1,800 lb
 Weight: .15 lb

Hooks – Used in a variety of strap and net applications for securing cargo.

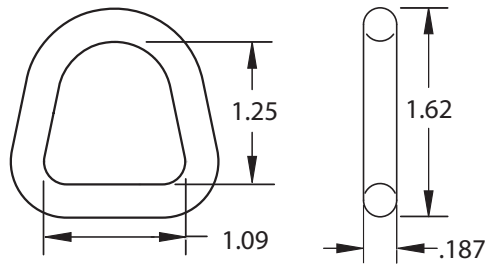


44192-12 Flat Hook w/keeper
 Finish: Zinc plated and meets RoHS & "Green Airplane" requirements for environmentally friendly materials.
 Load Capacity: 3,000 lb
 Weight: .14 lb

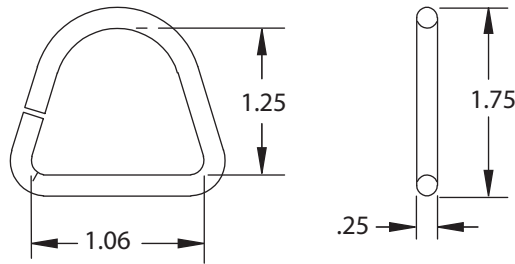


48559-10 Wire Hook, Narrow, NAS 1211D10
 Material: .25" diameter high strength steel wire
 Finish: Cadmium plated per AMS-QQ-P-416, Type II, Class 3, Gold Chromate
 Load Capacity: 3,000 lb
 Weight: .10 lb

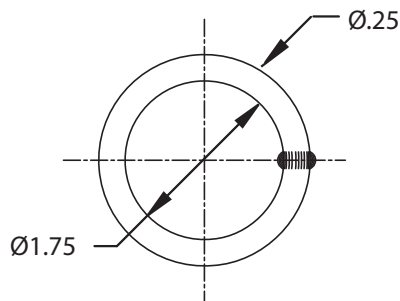
Rings – Used in a variety of tie down strap and net applications. Other sizes and styles may be available on special request and subject to minimums.



40053-11 D-Ring, 1"
 Meets all NAS 1382-1 requirements except plating.
 Is zinc plated versus cadmium for NAS.
 Load Capacity: 1,800 lb
 Weight: .03 lb



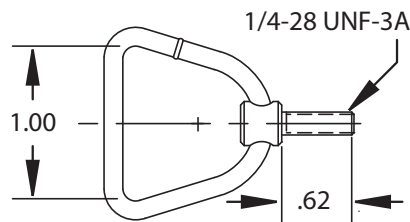
48557-10 D-Ring, 1"
 Meets requirements for NAS 1211A10, except wire diameter. Ring uses .25" wire dia. where NAS calls for a wire diameter of .23".
 Finish: Cadmium plated per AMS-QQ-P-416.
 Type II, Class 3, Gold.
 Load Capacity: 5,000 lb
 Weight: .07 lb



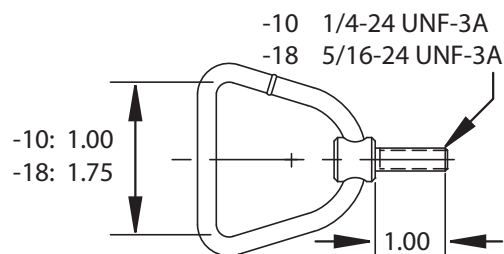
40171W28-8 Round Ring, Welded
 Made from .25" dia. 1030 steel wire and cold headed for strength. Welded with a 1.75" dia round ring.
 Finish: Zinc plated per ASTM B633, Type II, Class Fe/Zn 13, Gold Chromate
 Weight: .04 lb

Ring Fittings – Are available in a variety of styles and sizes. Shown are only a few designs that are available. Others may be available upon request and may be subject to minimums.

Swivel Fittings

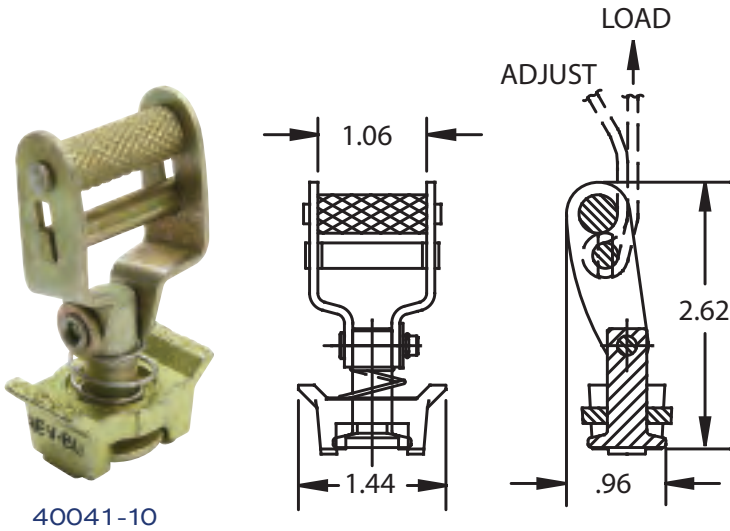


40027-10 Swivel Fitting, Short Thread
 Meets NAS 1211B10, except for wire diameter. Fitting uses .25" wire diameter, whereas the NAS calls out .23" wire diameter.
 Finish: Cadmium plated per AMS-QQ-P-416, Type II, Class 3 and baked.
 Load Capacity: 1,800 lb
 Weight: .09 lb

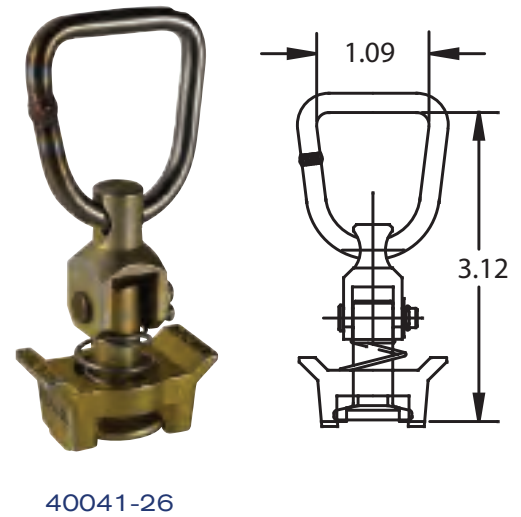


40028-10 Swivel Fitting, Long Thread, NAS 1211C10
40028-18 Swivel Fitting, Long Thread, NAS 1211C17
 Finish: Cadmium plated per AMS-QQ-P-416, Type II, Class 3 and baked.
 Load Capacity: -10 1,800 lb
 -18 5,000 lb
 Weight: -10: .09lb, -18: .26 lb

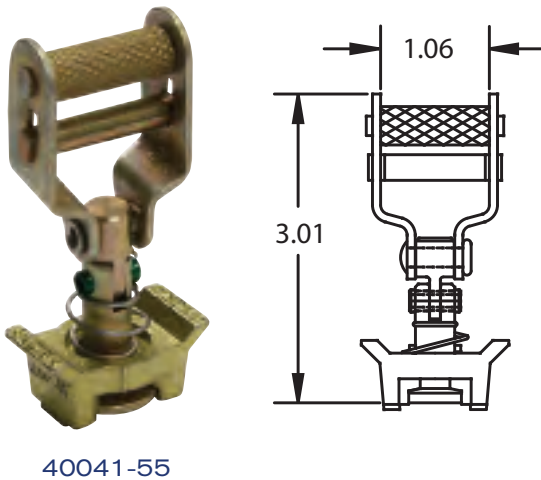
Breakaway Fittings – These fittings are desirable in some strap assemblies to eliminate the need for an additional buckle. Tensioning of straps is accomplished by pulling the handhold. The fitting is released by lifting the spring-loaded retainer and sliding the fitting free of the track. Sideplates, stud, and cross pins are heat treated alloy steel and cadmium plated. Retainers are heat treated cast steel. Other styles may be available on special request and may be subject to minimums.



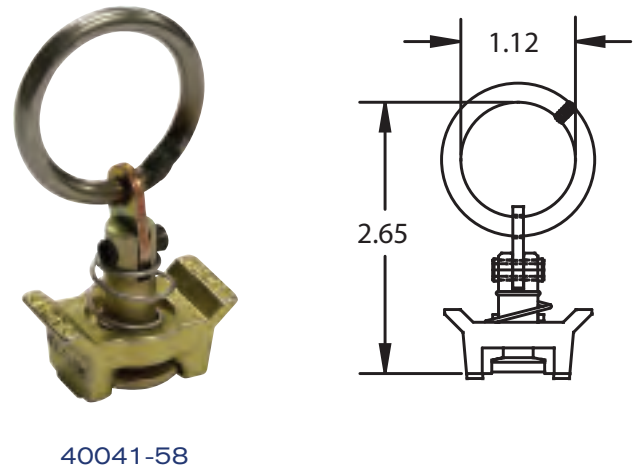
40041-10



40041-26



40041-55

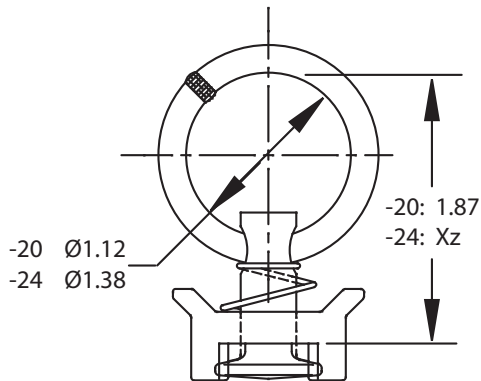


40041-58

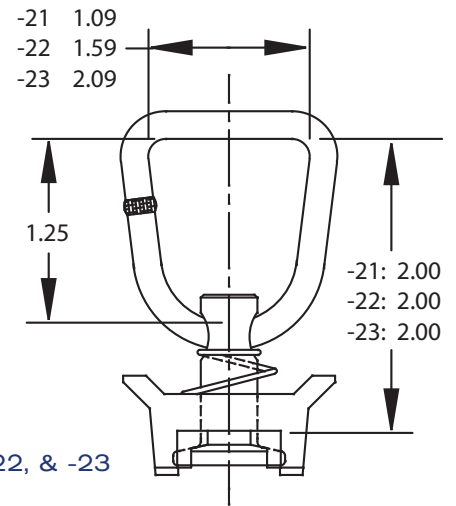
- 40041-10** Breakaway Fitting, Adjustable
 - 40041-26** Breakaway Fitting, Nonadjustable w/D-Ring
 - 40041-55** Breakaway Fitting, Adjustable
 - 40041-58** Breakaway Fitting, Nonadjustable w/Round Ring
- Finish: Cadmium plated per AMS-QQ-P-416, Type II, Class 3 and baked.
 Load Capacity: **at 45° angle to the track surface.

Dash No.	Load Capacity	Pin Color	Weight
-10	1600 lb. min	Gold	0.23
-26	2700 lb.	Green	0.20
-55	1000 lb.	Green	0.23
-58	750 lb.	Gray	0.16

Single Stud Cargo Fittings – These fittings are normally used in strap and net applications to attach to track and anchor plates. Fits aircraft seat track with the track cross section per MS33601, narrow profile aircraft track and 40000 anchor plates. The fitting is easily inserted into and removed from the track by simply lifting the spring-loaded retainer and sliding the fitting in the track. Studs are heat treated steel alloy, retainers are cast steel, rings and springs are stainless steel. Other styles may be available on special request and may be subject to minimums.



40340-20 & -24



40340-21, -22, & -23

- 40340-20** Single Stud Fitting w/Round Ring
- 40340-21** Single Stud Fitting w/D-Ring
- 40340-22** Single Stud Fitting w/D-Ring
- 40340-23** Single Stud Fitting w/D-Ring
- 40340-24** Single Stud Fitting w/Round Ring

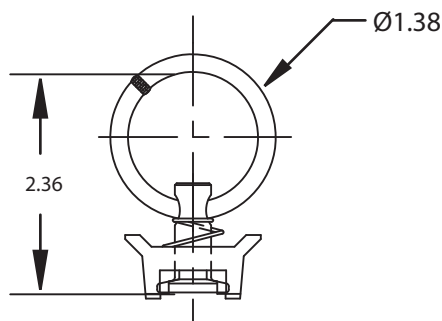
Meets RoHS and "Green Airplane" requirements for environmentally friendly materials.

Finish: Zinc electroplate with Trivalent chromate topcoat.

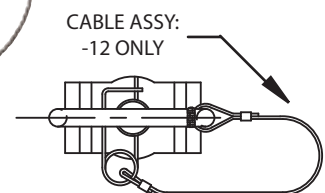
Load Capacity: 4,000 lb vertical, 3,000 lb at 45° angle and 2,000 lb horizontal to the track surface.

Weight: -20 thru -22 & -24: .16 lb, -23: .17 lb

Single Stud Locking Cargo Fittings – These fittings are the same as the single stud fittings above, but have a locking mechanism for added security. Other styles may be available on special request and may be subject to minimums.



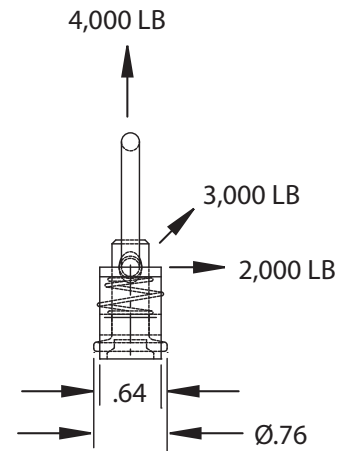
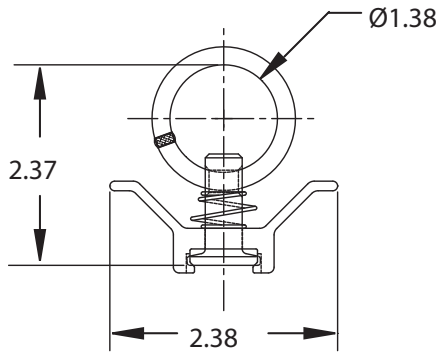
42546-10



42546-12

- 42546-10** Single Stud Locking Fitting w/Safety Pin
 - 42546-12** Single Stud Locking Fitting w/Safety Pin and Cable
- Meets RoHS and "Green Airplane" requirements for environmentally friendly materials.
 Finish: Zinc electroplate with Trivalent chromate topcoat.
 Load Capacity: 4,000 lb vertical, 3,000 lb at 45° angle and 2,000 lb horizontal to the track surface.
 Weight: -10: .16 lb, -12: .20 lb

Single Stud Cargo Fittings – Continued



40506-11 Single Stud Fitting w/Aluminum Retainer

Constructed with steel stud, stainless steel ring and spring and aluminum retainer

Finish: Steel components are zinc plated per ASTM B633, Type II, Class Fe/Zn 8. Stainless steel components are passivated per MIL-S-5002A. Aluminum component is anodized per MIL-A-8625, color green.

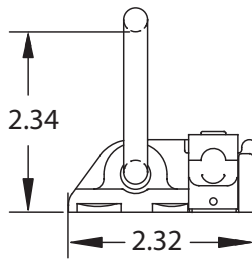
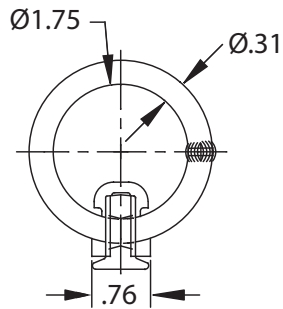
Load Capacity: 4,000 lb.vertical, 3,000 lb at 45° angle and 2,000 lb horizontal.

Weight: .10 lb

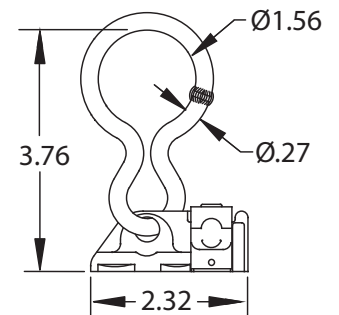
Double Stud Cargo Fittings – Double stud fittings for use in strap, net or bulk cargo restraint applications. Fittings attach to standard and heavy duty aircraft track or pallet edge rails. Easily removed by lifting the spring loaded retainer and sliding the fitting in the track. Bodies are forged 4130 steel and plungers are high strength malleable cast steel and rings are high carbon steel. Other styles and variations may be available on special request and may be subject to minimum quantity requirements.



47981-10



47981-11



47981-10 Double Stud Cargo Fitting w/round ring

47981-11 Double Stud Cargo Fitting w/twisted ring

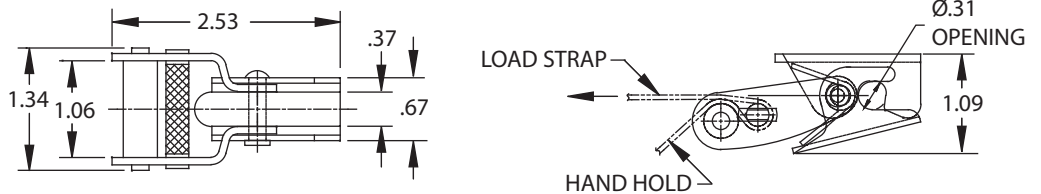
Finish: Zinc plated per ASTM B633, Type II

Load Capacity: -10 is 10,000 lb vertical and 5,000 lb horizontal

-11 is 5,000 lb.in any direction.

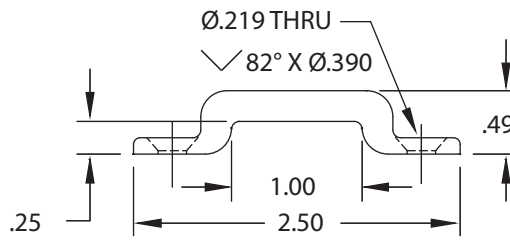
Weight: -10: .35 lb, -11: .36 lb

Adjustable Snap Latch – Can be used in some applications to eliminate the need for an additional tensioning buckle. Designed for use with one inch webbing. Tensioning of the strap is accomplished by pulling the handhold.



45387-10 Adjustable Snap Latch
 Finish: Zinc plated per ASTM B-633, Type II
 Load Capacity: 1,500 lb when used with Type XVII webbing per MIL-W-4088
 Weight: .17 lb

Footman's Loop – Used in a variety of light duty tie down applications on straps and nets.



43977-10 Footman's Loop, 1"
 Finish: Cadmium plated per AMS-QQ-P-35, Type II, Class 3 and baked.
 Load Capacity: 2,000 lb
 Working Load Limit: 660 lb when pulled with 1" webbing perpendicular to the track surface.
 Weight: .06 lb

WARRANTY STATEMENT

All Ancra International LLC products, unless otherwise indicated, are warranted to be free from defect in material or workmanship for a period of three (3) months from date of shipment. During this period, Ancra International LLC will, at its option, repair or replace without charge any products or part thereof found to be defective in material or workmanship. This warranty does not extend to any product which has been subject to misuse, abuse, negligence, accident, alteration or repair.

Ancra International LLC agrees to repair at its factory, or duplicate F.O.B. its works, any part of its own manufacture proving defective from faulty workmanship or material, within three months from date of shipment. Provided written notice is given immediately upon the discovery of such defect and the defective part is promptly returned to the place of manufacture, all carrying charges prepaid. Outside purchased equipment and accessories are guaranteed only to the extent that the Company recovers under the original manufacturer's guarantee. The Company shall not be held liable for any contingent damages or delays caused by defective material and will make no allowance for repairs or alterations made without its written consent.

Index by Part Name

Part Name	Part Number	Page
Anchor Plate, Dark Gray	40000-11	3
Anchor Plate, Dark Gray	40000-13	3
Breakaway Fitting, Adjustable	40041-10	18
Breakaway Fitting, Adjustable	40041-55	18
Breakaway Fitting, Non-adjustable w/D-Ring	40041-26	18
Breakaway Fitting, Non-adjustable w/Round Ring	40041-58	18
Buckle, 1" Overcenter	42816-20	16
Cargo Fitting, Double Stud w/Round Ring	47981-10	20
Cargo Fitting, Double Stud w/Twisted Ring	47981-11	20
D-Ring, 1"	40053-11	17
D-Ring, 1"	48557-10	17
Footman's Loop 1"	43977-10	21
Hook, Flat w/Keeper	44192-12	16
Hook, Narrow Wire, NAS 1211D10	48559-10	16
Litter Support Bracket, Stanchion Mount	42630-11	13
Ring, Round, Welded	40171W28-8	17
Seat Belt Shackle, Flat	41713-10	13
Seat Belt Shackle, w/15 degree bend	41713-32	13
Seat Fitting, Front Leg Ancra Lite	70028-10	10
Seat Fitting, Front Leg Quick Connect	49636-10	8
Seat Fitting, Front Leg Quick Connect	49636-12	8
Seat Fitting, Front Leg w/hex nut	43061-11	9
Seat Fitting, Front Leg w/wheel	43021-12	9
Seat Fitting, Front Leg w/wheel	43061-12	9
Seat Fitting, Rear Leg	49271-10	10
Seat Fitting, Rear Leg	40566-14	11
Seat Fitting, Rear Leg	42854-11	11
Seat Fitting, Rear Leg	44585-10	11
Seat Fitting, Rear Leg	45232-84	12
Seat Fitting, Rear Leg	47413-50	10
Seat Fitting, Rear Leg	47886-13	10
Seat Fitting, Rear Leg Ancra Lite	49694-10	12
Seat Fitting, Rear Leg Ancra Lite	49694-11	12
Seat Fitting, Rear Leg Quick Connect	49648-20	9
Seat Fitting, Rear Leg Triple Stud	49472-16	11
Seat Fitting, Rear Leg, Low Profile	43166-10	12
Single Stud Fitting w/Aluminum Retainer	40506-11	20
Single Stud Fitting w/D-Ring	40340-21	19
Single Stud Fitting w/D-Ring	40340-22	19
Single Stud Fitting w/D-Ring	40340-23	19
Single Stud Fitting w/Round Ring	40340-20	19
Single Stud Fitting w/Round Ring	40340-24	19
Single Stud Locking Fitting w/Safety Pin	42546-10	19
Single Stud Locking Fitting w/Safety Pin & Cable	42546-12	19
Snap Latch, Adjustable	45387-10	21
Strap, TSO, 1-3/4" Overcenter w/double stud fittings	70059-11	15

Index by Part Name

Part Name	Part Number	Page
Strap, TSO, 1-3/4" Overcenter w/snap hooks	70059-10.....	15
Strap, TSO, 1-3/4" Ratchet w/double stud fittings	70060-11.....	15
Strap, TSO, 1-3/4" Ratchet w/snap hooks	70060-10.....	15
Swivel Fitting, Long Thread, NAS1211C10.....	40028-10.....	17
Swivel Fitting, Long Thread, NAS 1211C17	40028-18.....	17
Swivel Fitting, Short Thread	40027-10.....	17
Threaded Base	42911-11.....	7
Threaded Base, Anti-Rattle.....	42911-41.....	7
Threaded Base, Flush Mount	42182-10.....	7
Threaded Base, Flush Mount	42182-11.....	7
Threaded Base, Flush Mount	42182-50.....	7
Threaded Base, Flush Mount	44413-10	7
Threaded Base, Flush Mount	44413-11	7
Threaded Double Stud	40361-118	5
Threaded Double Stud	40361-156	5
Threaded Double Stud	40361-21	5
Threaded Double Stud	40361-23	5
Threaded Double Stud	40361-25	5
Threaded Double Stud	40361-37.....	5
Threaded Double Stud	40361-56	5
Threaded Stud	40351-10.....	4
Threaded Stud	40351-11.....	4
Threaded Stud	40352-10.....	4
Threaded Stud	43112-11.....	5
Threaded Stud w/2 hex nuts	40073-20.....	4
Threaded Stud w/2 knurled nuts.....	40073-13.....	4
Threaded Stud w/2 knurled nuts.....	40073-14.....	4
Threaded Stud w/2 knurled nuts.....	40073-16.....	4
Threaded Stud w/knurled nut.....	40073-11.....	4
Threaded Stud w/knurled nut.....	40073-31.....	4
Threaded Stud w/knurled nut.....	40073-32.....	4
Threaded Stud, Offset Configuration	40191-14.....	6
Threaded Stud, Standard Configuration.....	40191-10.....	6
Threaded Stud, Standard Configuration.....	40191-11.....	6
Threaded Stud, Standard Configuration.....	40191-12.....	6
Threaded Stud, Standard Configuration.....	40191-13.....	6
Threaded Stud, Standard Configuration.....	40191-15.....	6
Threaded Stud, Standard Configuration.....	40191-18.....	6
Threaded Stud, Standard Configuration.....	40191-22.....	6
Threaded Stud, Standard Configuration.....	40191-27.....	6
Threaded Stud, Standard Configuration.....	40191-29.....	6
Track, Heavy Duty Aircraft.....	40467-10.....	3
Track, Heavy Duty Aircraft.....	40467-11.....	3
Track, Medium Duty Aircraft	40456-10	3
Track, Medium Duty Aircraft	40456-11	3

Index by Part Number

Part Number	Part Name	Page
40000-11	Anchor Plate, Dark Gray	3
40000-13	Anchor Plate, Dark Gray	3
40027-10	Swivel Fitting, Short Thread	17
40028-10	Swivel Fitting, Long Thread, NAS 1211C10	17
40028-18	Swivel Fitting, Long Thread, NAS 1211C17	17
40041-10	Breakaway Fitting, Adjustable	18
40041-26	Breakaway Fitting, Non-adjustable w/D-Ring	18
40041-55	Breakaway Fitting, Adjustable	18
40041-58	Breakaway Fitting, Non-adjustable w/Round Ring	18
40053-11	D-Ring, 1"	17
40073-11	Threaded Stud w/knurled nut	4
40073-13	Threaded Stud w/2 knurled nuts	4
40073-14	Threaded Stud w/2 knurled nuts	4
40073-16	Threaded Stud w/2 knurled nuts	4
40073-20	Threaded Stud w/2 hex nuts	4
40073-31	Threaded Stud w/knurled nut	4
40073-32	Threaded Stud w/knurled nut	4
40171W28-8	Round Ring, Welded	17
40191-10	Threaded Stud, Standard Configuration	6
40191-11	Threaded Stud, Standard Configuration	6
40191-12	Threaded Stud, Standard Configuration	6
40191-13	Threaded Stud, Standard Configuration	6
40191-14	Threaded Stud, Offset Configuration	6
40191-15	Threaded Stud, Standard Configuration	6
40191-18	Threaded Stud, Standard Configuration	6
40191-22	Threaded Stud, Standard Configuration	6
40191-27	Threaded Stud, Standard Configuration	6
40191-29	Threaded Stud, Standard Configuration	6
40340-20	Single Stud Fitting w/Round Ring	19
40340-21	Single Stud Fitting w/D-Ring	19
40340-22	Single Stud Fitting w/D-Ring	19
40340-23	Single Stud Fitting w/D-Ring	19
40340-24	Single Stud Fitting w/Round Ring	19
40351-10	Threaded Stud	4
40351-11	Threaded Stud	4
40352-10	Threaded Stud	4
40361-118	Threaded Double Stud	5
40361-156	Threaded Double Stud	5
40361-21	Threaded Double Stud	5
40361-23	Threaded Double Stud	5
40361-25	Threaded Double Stud	5
40361-37	Threaded Double Stud	5
40361-56	Threaded Double Stud	5
40456-10	Seat Track, Aircraft Medium Duty	3
40456-11	Seat Track, Aircraft Medium Duty	3
40467-10	Seat Track, Aircraft Heavy Duty	3

Index by Part Number

Part Number	Part Name	Page
40467-11	Seat Track, Aircraft Heavy Duty	3
40506-11	Single Stud Fitting w/Aluminum Retainer	20
40566-14	Rear Leg Seat Fitting	11
41713-10	Seat Belt Shackle, Flat	13
41713-32	Seat Belt Shackle, w/15 degree bend	13
42182-10	Threaded Base, Flush Mount	7
42182-11	Threaded Base, Flush Mount	7
42182-50	Threaded Base, Flush Mount	7
42546-10	Single Stud Locking Fitting w/Safety Pin	19
42546-12	Single Stud Locking Fitting w/Safety Pin & Cable	19
42630-11	Litter Support Bracket, Stanchion Mount	13
42816-20	Overcenter Buckle, 1"	16
42854-11	Rear Leg Seat Fitting	11
42911-11	Threaded Base	7
42911-41	Threaded Base, Anti-Rattle	7
43021-12	Front Leg Seat Fitting w/wheel	9
43061-11	Front Leg Seat Fitting w/hex nut	9
43061-12	Front Leg Seat Fitting w/wheel	9
43112-11	Threaded Stud	5
43166-10	Rear Leg, Low Profile Seat Fitting	12
43977-10	Footman's Loop 1"	21
44192-12	Hook, Flat w/Keeper	16
44413-10	Threaded Base, Flush Mount	7
44413-11	Threaded Base, Flush Mount	7
44585-10	Rear Leg Seat Fitting	11
45232-84	Rear Leg Seat Fitting	12
45387-10	Snap Latch, Adjustable	21
47413-50	Rear Leg Seat Fitting	10
47886-13	Rear Leg Seat Fitting	10
47981-10	Double Stud Cargo Fitting w/Round Ring	20
47981-11	Double Stud Cargo Fitting w/Twisted Ring	20
48557-10	D-Ring, 1"	17
48559-10	Hook, Wire Narrow, NAS 1211D10	16
49271-10	Rear Leg Seat Fitting	10
49472-16	Rear Leg Seat Fitting, Triple Stud	11
49636-10	Front Leg, Quick Connect Seat Fitting	8
49636-12	Front Leg, Quick Connect Seat Fitting	8
49648-20	Rear Leg, Quick Connect Seat Fitting	9
49694-10	Rear Leg Ancra Lite Seat Fitting	12
49694-11	Rear Leg Ancra Lite Seat Fitting	12
70028-10	Front Leg Ancra Lite Seat Fitting	10
70059-10	TSO Strap, 1-3/4" Overcenter w/snap hooks	15
70059-11	TSO Strap, 1-3/4" Overcenter w/double stud fittings	15
70060-10	TSO Strap, 1-3/4" Ratchet w/snap hooks	15
70060-11	TSO Strap, 1-3/4" Ratchet w/double stud fittings	15

Notes





Ancra International LLC

Headquarters

875 W. 8th Street
Azusa, CA 91702-2247
Toll Free: +1 (800) 973-5092
Main Phone: +1 (626) 765-4800
Fax: +1 (626) 657-2213

Customer Service

Email: djohnson@ancra.com
Please visit us at www.ancra.com

D I S T R I B U T E D B Y :

Catalog 403



N U M B E R O N E B Y D E S I G N